

Primus blue

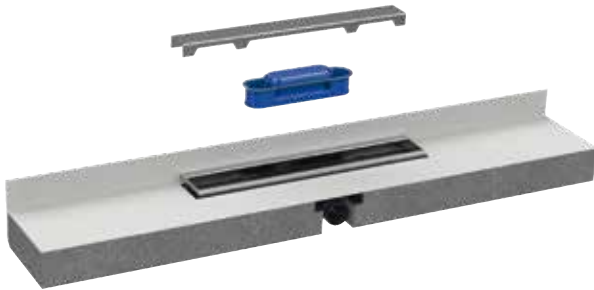


HL

HL531Prblue

Shower channel Primus **blue**

With the HL531Prblue shower channel installation is quick and easy. It differs from conventional wall-mounted shower channels due to its EPS element, which can be adapted to any situation on-site and a unique hybrid odor trap. Through the large selection of different design covers and colors, every bathroom can be designed individually.



Technical data:

Height : 75 mm

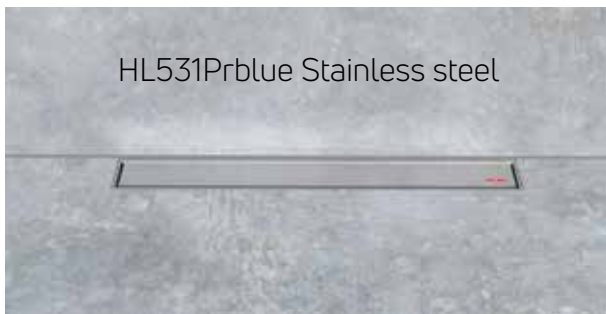
Length: 1200 mm, can be cut to length up to min. 600 mm

Trap: **Primus blue**, hybrid trap with sealing water and mechanical odor barrier (absolutely odor-tight even without water)

Drainage capacity: 0.6 l/s, connection DN 50 (room side)

Suitable for: Wall coverings up to 17 mm and floor coverings 13 mm (incl. adhesive).

- Shower channel | linear drainage for installation on the wall
- Easy to install and simple to waterproof
- Waterproof fleece-laminated surface with wall extension
- Fixed integrated 13 mm high stainless steel frame
- Can be cut to any size: One product for all lengths between 600mm and 1200mm
- With hybrid trap (odor-proof even after drying out): Your bathroom always smells fresh and clean
- Trap insert is completely removable and can therefore be easily cleaned if necessary
- The cover is available in „Standard“, „Design“ and „Individual“ versions
- Four colors for individual design



HL Hutterer & Lechner GmbH
Brauhausgasse 3-5, A-2325 Himberg, Austria
T: +43 / (0)2235 / 862 91-0
F: +43 / (0)2235 / 862 91-31
office@hl.at
www.hl.at